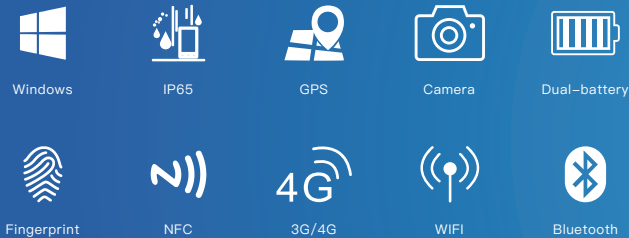


Fully Rugged Notebook

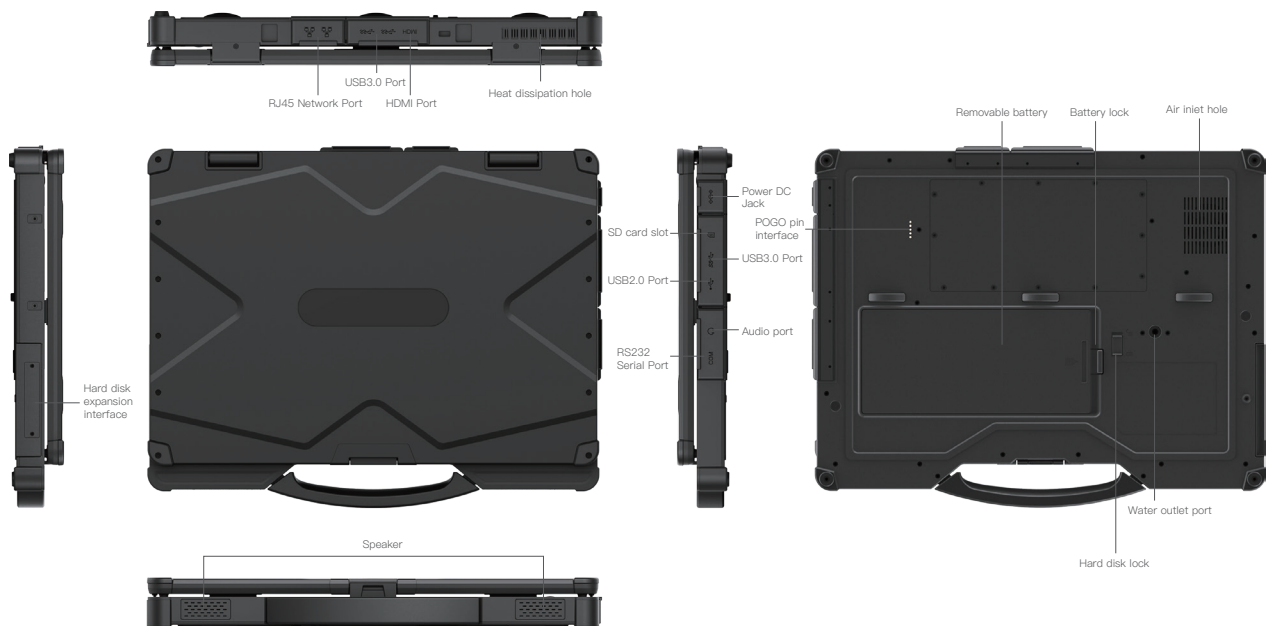
EM-X14U



Functions

- Support for Win 7, Win 10 system
- Intel® Core™ i5-8250U/i7-8550U, greatly improved performance
- The fuselage is equipped with dual battery design, and the endurance is increased to 6-8 hours
- IP65 high protection level, in accordance with MIL-STD-810G
- Support GPS, Optional Beidou, more accurate positioning
- Support 1920x1200 FHD, optional with Corning gorilla screen and sunshine visual screen
- Support rich expansion slot and fingerprint design, can be applied to various complex industry needs and expand demand

Product Six Views



Specification Parameter

Basic parameters	
Dimension	356 x 269 x 37mm
Weight	device unit 2850g
Device Color	black, silvery
LCD	14inch IPS 16:9, 1920*1200
Touch Panel	10points Capacitive, G+G, Corning Gorilla Glass
Camera	Front 2.0MP
I/O	HDMI x 1, POGO 5pin x 1, USB 2.0 x 1, USB 3.0 x 3, SIM Card x 1, SD Card x 1, DB9 RS232 x 1, RJ45 x 2, Φ3.5mm standard earphone jack x 1, DC 19V 3.42A x 1
Power	AC100V ~ 240V, output DC 19V/3.42A/65W
GPS	Support GPS (Optional Beidou)

Battery (Built-in)	
Capacity	7.4V/1750mAh
Type	Built in Li_polyment,battery loadable
Endurance	0.5hrs (Default 50% volume, default 200 nit, Play 720P HD video)

Battery (Pluggable)	
Capacity	7.4V/6300mAh
Type	Li_polyment, removeable battery
Endurance	8.5hrs (Default 50% volume, default 200 nit, Play 720P HD video)

Performance parameter	
CPU	Intel® Core™ i5-8250U/i7-8550U
OS	Windows 7/Windows 10
RAM	8GB/16GB
ROM	256GB/512GB

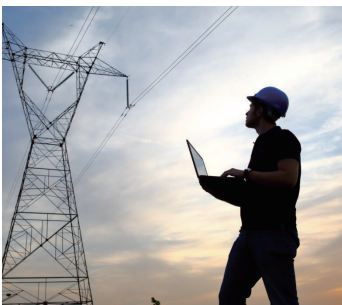
Network connections	
WIFI	2.4G+5.8G dual frequency, WIFI 802.11(a/b/g/n/ac)
Bluetooth	BT4.2 (BLE) class1 transmission distance: 10m
3G/4G (Optional)	LTE FDD: B1/B3/B5/B7/B8/B20/B28A LTE TDD: B38/B40/B41 WCDMA: B1/B2/B5/B8 GSM: 850/900/1800/1900MHz

Reliability	
Operate Temperature	-20 °C ~ 60 °C
Store Temperature	-30 °C ~ 70 °C
Humidity	95% Non-Condensing
IP Grade	IP65

Optional modules	
Fingerprint	SPI fingerprint (power on login)
NFC	NXP NFC 13.56MHz Support ISO/IEC 14443A/14443B/15693/18092/mifare protocol, Card reading distance: 4cm

Application Range

Various modules and accessories can be selected to meet customers' application in various industries.



Power Maintenance



Equipment Testing



Automobile Manufacturing



Public Security